

## A SMALL INVESTMENT TO PROTECT A BIG



Buying a high-quality turbocharger isn't cheap. But you know what can make it even more expensive? Allowing your turbocharger to get damaged by overspeeding for an extended period of time. Fortunately,

the new TSG-1 Turbo Speed Gauge monitors turbo speed to protect your investment in your turbocharger.

### WHAT IS THE TSG-1? //

The new Turbo Speed Gauge TSG-1 is a compact, 2 1/16" circular gauge that can be easily attached to the dashboard, A-pillar, instrument cluster or a variety of other locations. The gauge is designed for use with the turbo speed sensor integrated into all BorgWarner EFR and many Airwerks series turbos. Using a

speed sensor attached to the turbocharger, the gauge accurately displays turbo speed in both numeric and graphical formats. Whenever turbo speed exceeds the safe limit and the turbo begins to overspeed, the TSG-1's screen flashes, instantly notifying the driver.

### TSG-1 SPECIFICATIONS //

- Compact 2 1/16" circular gauge
- 128 x 64 pixel graphical display
- Pairs with turbo speed sensor
- 12-bit 0-5 volt analog input for MAP / pressure sensors
- 12-bit 0-5 volt analog output for ECU and/or datalogging

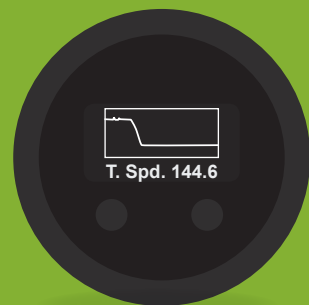


## INPUT & OUTPUT CAPABILITIES //

The TSG-1 analog input can capture and display data from auxiliary sensors such as MAP/Boost sensor, oil or fuel pressure and more.

The TSG-1 generates a 12-bit 0-5 volt analog turbo speed signal that can be connected to an engine control system or datalogger.

The TSG-1 also generates a warning output signal during overspeed events that can illuminate a warning light, trigger a relay or other device.



TURBO SPEED  
(GRAPHICAL)



TURBO SPEED  
(NUMERICAL)



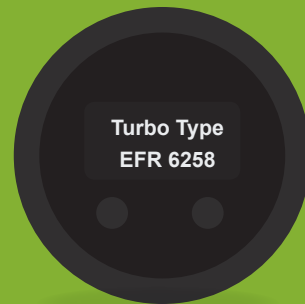
OVERSPEED  
STATISTICS



BOOST / SPEED  
(NUMERICAL)



TURBO SPEED  
0-5V



CONFIGURATION  
MENU

# TSG-1

HARDWARE  
INTERFACE  
SCHEMATIC

